

# MUROZERO PASTRY



## FEATURES



## KEY FEATURES

**Performances:** Ventilated refrigeration with oversized evaporator | **Visibility:** extraordinary enhancement of displayed products | **Energy saving:** High insulation | **LED lighting** as standard

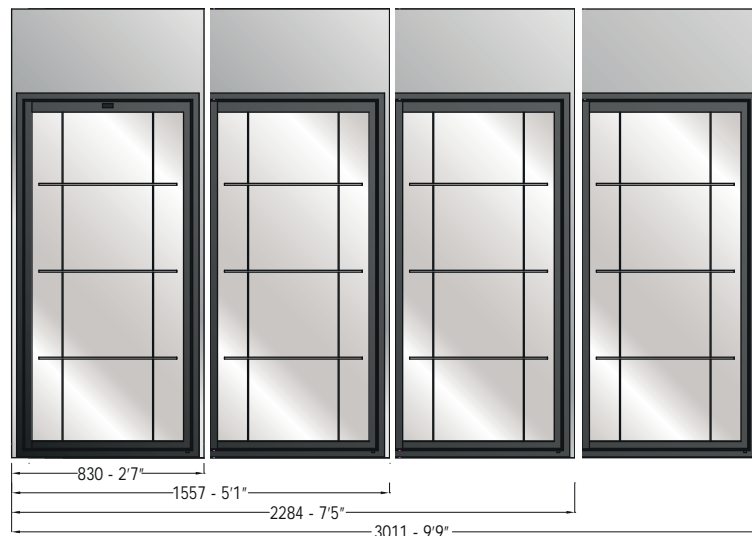
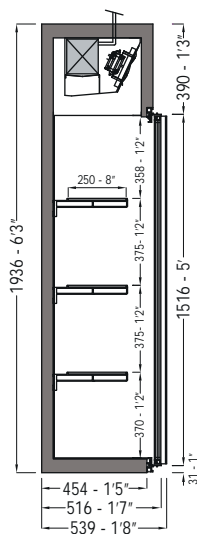
VERTICALI

Modular refrigerated wall cabinet with possibility of customization through magnetic panels- Positive temperature (+4°/6°C) | heat-insulated structure with ecological polyurethane and s/scoated | refrigeration obtained by forced air blown system | automatic electric defrost | digital control panel | Remote condensing unit supplied (within 10 lm) | double glazed leaf door with temperature display incorporated | nr.03 adjustable glass shelves + nr. 01 fixed bottom plate | vertical LED lighting incorporated inside door profiles

**CIAM**  
REFRIGERATION DESIGN

# MUROZERO PASTRY

## SECTIONS AND MODELS



**ONE DOOR**    **TWO DOORS**    **THREE DOORS**    **FOUR DOORS**

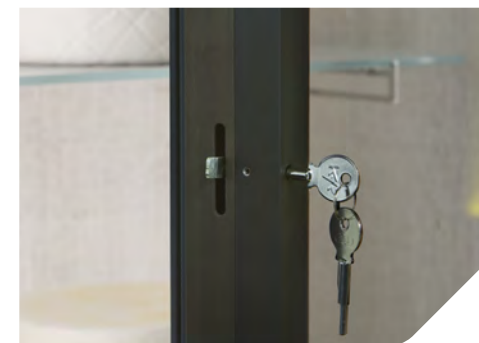
TECHNICAL FEATURE		VERSIONS			
		830	1557	2284	3011
External dim. (L-D-H)	inches mm	32 $\frac{5}{8}$ "-21 $\frac{1}{4}$ "-76 $\frac{1}{4}$ " 830-539-1936	61 $\frac{1}{4}$ "-21 $\frac{1}{4}$ "-76 $\frac{1}{4}$ " 1557-539-1936	89 $\frac{7}{8}$ "-21 $\frac{1}{4}$ "-76 $\frac{1}{4}$ " 2284-539-1936	118 $\frac{1}{2}$ "-21 $\frac{1}{4}$ "-76 $\frac{1}{4}$ " 3011-539-1936
Crated dim. (L-D-H)	inches mm	39 $\frac{3}{4}$ "-28 $\frac{3}{8}$ "-84 $\frac{5}{8}$ " 1010-720-2150	68 $\frac{1}{8}$ "-28 $\frac{3}{8}$ "-84 $\frac{5}{8}$ " 1730-720-2150	96 $\frac{7}{8}$ "-28 $\frac{3}{8}$ "-84 $\frac{5}{8}$ " 2460-720-2150	125 $\frac{5}{8}$ "-28 $\frac{3}{8}$ "-84 $\frac{5}{8}$ " 3190-720-2150
Refrigeration	Type	Ventilated	Ventilated	Ventilated	Ventilated
Refrigerated area	Type	Full volume	Full volume	Full volume	Full volume
Operating temp.	°C / °F	+4 / 39.2	+4 / 39.2	+4 / 39.2	+4 / 39.2
Cooling power*	(W)	800*	1400*	2000*	2200*
Electric supply	(V/ph/Hz)	230/1/50 (UE) 220/1/60 (USA)	230/1/50 (UE) 220/1/60 (USA)	230/1/50 (UE) 220/1/60 (USA)	230/1/50 (UE) 220/1/60 (USA)
Power consumption	(W/A)	880 / 5,7	1100 / 6,5	1400 / 7,5	1600 / 9,5
Defrost	Mode/type	automatic/electric	automatic/electric	automatic/electric	automatic/electric
Climatic class	N°/°C(F°)/H.R.	4+ / 35 (90) / 70%	4+ / 35 (90) / 70%	4+ / 35 (90) / 70%	4+ / 35 (90) / 70%
Refrigerant Gas	Type	R452A	R452A	R452A	R452A
Net weight	Kg / Lb	190 / 419	250 / 551	300 / 661	370 / 815
Crated weight	Kg / Lb	260 / 573	370 / 815	460 / 1014	570 / 1256

\* At -10°C of expansion

The company reserves the right to make modifications to the products without prior notice.

CIAM s.p.a. | Viale dei Pini 9 | 06081 | Petignano di Assisi | PG - Italy | Tel: 0039 07580161  
web: www.ciamweb.it | mail: info@ciamgroup.it

2017 / v1.0



### STANDARD FEATURE

- Tempered glass shelves
- Inner surfaces in polish s/s
- Double glazing door
- LED lighting
- Remote condensing unit

### OPTIONAL

- Internal custom cladding
- Epoxy painting
- Self evaporation pan
- S/s structure for wine exposition
- S/s structure for cold cuts and ham exposition
- Custom length upon request

# VERTICALI



**CIAM**  
REFRIGERATION DESIGN