



## FEATURES



## EXPOSITIVE DECK FINISHING



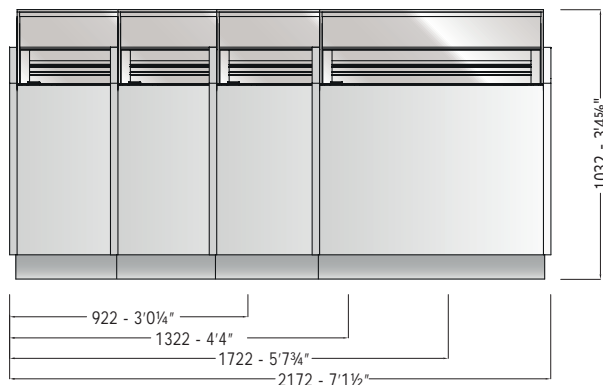
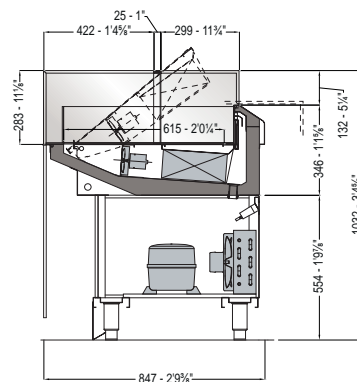
## KEY FEATURES

- Visibility:** extraordinary enhancement of displayed products
- Reliability:** hermetic single-phase compressor, single evaporator, automatic defrost
- Practicality:** patented opening system; lift-up deck with pistons
- Customizable:** great wide range of finishing for interior and exterior
- Energy Saving:** double LED lighting as standard

Transparent glass upper structure without metal profile; manual or electric (patent pending) opening of the top glass for accessing the display area | Molded heat-insulated tank coated by AISI 304 s/s | ventilated refrigeration with finned evaporator and thermostatic valve | lift-up mechanism for the display plate and the evaporator with gas pistons as a guarantee of the perfect cleaning of the tank | s/s perimetral top | temperature display | digital control panel | Stainless steel adjustable feet | gray galvanized-steel frame support | under tank counter in plastic-coated steel

# MOVE16 PASTRY

## SECTIONS AND MODELS



### MOVE16 - PASTRY

TECHNICAL FEATURE		VERSIONS			
		900	1300	1700	2150
External dimensions (L-D-H)	inches mm	36 1/4"- 33 3/8"- 40 5/8" 922 - 847 - 1032	52"- 33 3/8"- 40 5/8" 1322 - 847 - 1032	67 3/4"- 33 3/8"- 40 5/8" 1722 - 847 - 1032	85 1/2"- 33 3/8"- 40 5/8" 2172 - 847 - 1032
Crated dimensions (L-D-H)	inches mm	43 1/8"- 39 3/8"- 55 1/8" 1100-1000-1400	59"- 39 3/8"- 55 1/8" 1500-1000-1400	74 3/4"- 39 3/8"- 55 1/8" 1900-1000-1400	90 1/2"- 39 3/8"- 55 1/8" 2300-1000-1400
Refrigeration	Type	Fan Ventilated	Fan Ventilated	Fan Ventilated	Fan Ventilated
Refrigerated display area	Type	Deck	Deck	Deck	Deck
Operating temperature	°C / °F	4 / 39	4 / 39	4 / 39	4 / 39
Compressor	nr. / Type	1 / hermetic	1 / hermetic	1 / hermetic	1 / hermetic
Cooling power *	(W)	380	550	690	850
Electric supply	(V/ph/Hz)	230/1/50 (UE) 120/1/60 (USA)	230/1/50 (UE) 120/1/60 (USA)	230/1/50 (UE) 120/1/60 (USA)	230/1/50 (UE) 120/1/60 (USA)
Power consumption	(W/A)	565/3,5	680/4,0	885/4,5	1100/6,0
Defrost	Mode / type	automatic	automatic	automatic	automatic
Climatic class	N°/°C (F°)/H.R.	4/30 (86)/55%	4/30 (86)/55%	4/30 (86)/55%	4/30 (86)/55%
Refrigerant Gas	Type	R452A	R452A	R452A	R452A
Net weight	Kg / Lb	104 / 229	127 / 279	157 / 346	172 / 379
Crated weight	Kg / Lb	164 / 361	207 / 456	257 / 566	297 / 654



### STANDARD FEATURE

- Concealed LED lighting
- Extra clear glass
- Lift-up deck with pistons
- Patented upper sliding glass system

### OPTIONAL

- Working top perimeter (brushed s/s, corian, black HPL, granite)
- Resin display plate
- Remote condensing unit
- Electric opening
- Pastry/Praline system
- Exclusive Move16 Panelling kit (refer to picture above)

\* At -10°C of expansion

The company reserves the right to make modifications to the products without prior notice.

CIAM s.p.a. | Viale dei Pini 9 | 06081 | Petignano di Assisi | PG - Italy | Tel: 0039 07580161  
web: [www.ciamweb.it](http://www.ciamweb.it) | mail: [info@ciamgroup.it](mailto:info@ciamgroup.it)

2017 / v1.0

# MOVE16



**CIAM**  
REFRIGERATION DESIGN